

MOMENTUM

Momentum Studio 9/31 Thompson St Bowen Hills QLD 4006

PH: +617 3252 4150 FAX: +617 3252 4250

www.momentumstudio.com.au

rental@momentumstudio.com.au

EQUIPMENT & STUDIO HIRE PRICE LIST 2010

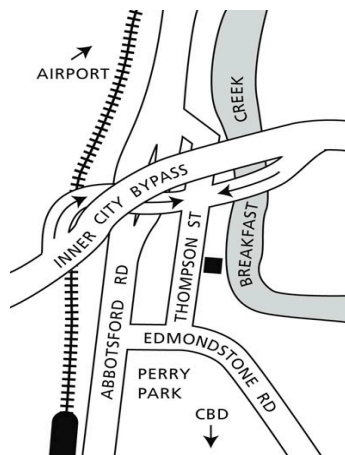
Momentum Studio is South East Queensland's premier rental option, conveniently located between Brisbane Airport and the CBD. It offers studio and equipment hire as well as professional back-up and technical support for the creative industries.

Momentum Studio is an architecturally designed, air-conditioned complex with two studios, and a fully equipped kitchen and makeup room. It caters for clients and guests with a comfortable lounge area and a riverfront balcony. Access is simple and convenient with off street parking and full roller door frontage.

The hire equipment is the best currently available, with Sinar high-end cameras, Rollei and Canon cameras, Broncolor lighting - all within a state of the art Mac environment.

Momentum also offers a comprehensive professional support system and has been in business for over 30 years dealing closely with the advertising, creative and photographic industry. It is also a creative studio/office for photographers, providing support and facilities. Our anticipation of their needs is reflected in the service that we offer, from sand bags to highly trained assistants and post-production, from file handling and retouching, to large format printing.

"Our aim is to make your life ever more comfortable"



*Momentum studio is part of the Worldwide
"Broncolor World Light rent a system"*

WORLD
LIGHT
RENT A SYSTEM

Studio Rental

Prices exclude GST

STUDIO One

Studio One is 6m x 14.3m with a cyclorama. The cyclorama is 6m x 5m x 4m high and painted white. The studio comes equipped with S-table, studio stand, reflectors and kitchen access. A quotation is available upon request for immaculate white or any colour change.

Half Day

Full Day

\$450

\$650

STUDIO Two

Studio Two is 6m x 8.4m. The studio is fully equipped with S-table, studio stand, reflectors and kitchen access.

\$350

\$450

STUDIO One + Two

This configuration offers a high level of added space to accommodate a large crew. The overall space is 12m x 14m with a direct access to make-up room and kitchen. The studio is fully equipped with S-table, studio stand, reflectors and kitchen access.

\$500

\$800

Makeup

The make up room is available free of charge with each hire, however, needs to be booked.

\$100

Kitchen

This applies to shoots involving food styling/kitchen utilities:

\$50

\$100

Coffee machine, Merlo coffee and sundries – flat fee

\$25

\$50

TVC & Special Events

Rentals for TVC and special events requires minimum rental of Studio One and Two hire.

\$2000

Terms of Hire & Liability

Goods are stored at the sole risk and responsibility of the storer who shall be responsible for any and all theft, damage and deteriorations of the goods, and shall bear the risk of any and all damage caused by flood or fire or leakage or overflow of water, heat, spillage of material from any other space, removal or delivery of the goods, pest or vermin or any other reason whatsoever including acts or omissions of the Owner or persons under its control. Deliveries and removals from the Studio's space will not be permitted by any person other than the Storer Unless they give permission or written instruction to Momentum. They must identify themselves and provide written authority for the persons' authorised to enter the space. Unless covered by their insurance, the Storer will not store items which are irreplaceable such as currency, jewellery, furs, deeds, paintings, curios, works of art and items of sentimental value.

Rental of Studio

In order to cover our own public liability requirements a copy of the hirers' current public liability policy of no less than \$10 million must be supplied to us before we can confirm any studio booking. Your insurance company will supply you with a "Certificate of Currency."

Studio Policy & Rates

Open MON to FRI. Weekends (by request) incur assistant fee of \$275.

The daily rate is based on a 9 hour day. Overtime at \$75 per hour.

Cycloramas are freshly painted white on request only. Min fee of \$80 - a colour change is possible with quote including painting cyc back to white.

Booking must be confirmed a min of 36 hours before the shoot day. A \$300 cancellation fee applies.

All files left on Rental Computers will be erased within 7 days.

Weekend Rates

Studio is same as per Day Rate plus \$50 Weekend Waiver and the hire of an Assistant at \$275.

The Weekend rate is based on a 9 hour day. Overtime at \$75 per hour.

Gear and Equipment Hires to be collected Friday by close of business and returned Monday morning at x 1.5 day rate.

Lighting Equipment

Studio Lighting Equipment

	Half Day	Full Day
Cumulite 2m x 1m on Stand 2 x 6400J		\$120
Hazy Light 1m x 1m on Stand 6400J		\$80
Mini Cumulite 1m x 600mm on Stand		\$80
Para Reflector 2.2m		\$120
Strip Lights 1m x 20cm		\$45

Packs

Graffit A4 - High speed pack RFS (3200J)		\$120
Mobil Kit 1200J inc 1 x head and spare battery		\$140
Mobil Spare Battery		\$15
Opus 2 Pack (1600J)		\$80
Pulso 4 - High speed pack (1/125th - 1/6000th) (3200J)		\$120
Pulso 8 Pack (6400J)		\$90
Topaz A2 Pack – Asymmetric (1600J)		\$80
Topaz A4 Pack – Asymmetric (3200J)		\$80
Vario-pulse Intermediate high speed devise to suit Bron packs (1/125th - 1/5000th)		\$40
Verso Pack A2 (1600J)		\$100
Verso Pack A2 (Location - with Powerdock Battery) (1600J)		\$140
Verso Pack A4 (Location – with Powerdock Battery) (3200J)		\$140
Verso Pack A4 RFS (3200J)		\$120
Verso Powerdock		\$40
LONG TERM RENTAL PRICES ON APPLICATION		POA

Lights

Boxlight 30 (40cm x 30cm) (1600J)	\$40
Boxlight 40 (40cm x 30cm) (1600J)	\$50
Fresnel Bron head (3200J)	\$60
Mobil Head	\$40
Pulso 4 Head inc. P70 reflector (3200J)	\$70
Pulso 8 Head (6400J)	\$110
Pulso f4 Head inc. P70 reflector (3200J)	\$70
Ring flash (3200J)	\$75
Strip lights (1m x 20cm)	\$45

Continuous Lights

Lowel Tota (800W)	\$30
Kino Flow	\$60

Lighting Accessories

	Half Day	Full Day
150 x 150 softbox		\$80
80 x 140 softbox		\$70
80 x 80 softbox		\$60
Beauty Dish kit (inc. scrim & grid attachments)		\$60
California Sun-swatter Scrim		\$80
Coloured Gels Kit		\$40
Extension lead (head to pack)		\$25
Grid set P70 (set of 3)		\$40
Light meter FCM Broncolor		\$30
Mobil/Pulso P70 Adaptor		\$10
Para Reflector 2.2m (on location with agreed assistant)		\$150
Reflector P120-wide Broncolor		\$20
Reflector P70		\$15
Ring flash 3200J		\$75
Satellite Reflector		\$60
Sync cord 5m		\$25
Transmitter IRX		\$30
Transmitter RFS		\$40

Umbrella - translucent (110cm)	\$50
Umbrella – silver (80cm)	\$50
Umbrella – white (120cm)	\$50
Umbrella reflector	\$15

Portable Location Flash

Mobil Kit

Includes:

- 1 Mobil Location Pack (1200J) - Symmetrical
- 1 Mobil head (1600J)
- 1 battery
- 1 sync cord
- 1 charger
- 1 stand

\$140

Portable Location Flash Warning

These units are NOT to be operated with generators.
Damages incurred by such usage are the hirer's responsibility.

Mobil Accessories

Half Day

Full Day

1 Mobil Head (1600J)		\$40
1 spare battery		\$15
1 Pulso P70 adaptor		\$10

Grip & gear

2 way radios	\$40
Apple Boxes	\$60
Blue Screen 2.4m x 3.6m	\$50
C stands	\$25
Cinefoil	\$8
Citroen Berlingo van	POA
Clamps	\$5
Coloured background rolls (\$16 per metre wastage)	\$80
Correction Filter	\$20
Extension Leads	\$20
Flags – light shaping flags in assorted sizes	\$15
Floor Stand	\$15
Folding chairs	\$25

Folding Table	\$20
Full size Trampoline (requires assembly)	\$100
Gobos	\$15
Green Screen Roll 9 foot wide	\$80
Industrial Fan Large	\$30
Jumbo Stand on Wheels	\$80
Ladder	\$40
Ladder (Step)	\$30
Large Boom Arm	\$40
Magic Arms	\$30
Master Light Stand Manfrotto	\$30
Perspex Sheet 1200mm x 1200mm x 30mm thick (studio only)	\$80
Plinths	\$30
Poly Boards Various sizes	\$20
Power Boards	\$10
Power leads (assorted lengths)	\$20
Raw Canvas (5.2m x 3.5m)	\$40
Reflector 5 in 1 (black case 42" – 106 cm)	\$35
Sail Cloth 3 x 3 m (no frames)	\$40
Sailcloth scrim 1.8sqm ($\frac{1}{4}$, $\frac{1}{2}$ & $\frac{3}{4}$ ounce weights avail.)	\$40
Sandbags	\$5
Sinar 2-way mirror for special effects	\$50
Sun umbrellas	\$10
Toolbox	\$30
Tripods 028 Manfrotto Large	\$80
Tripods 055 Manfrotto	\$50
Trolleys	\$25

Camera - Digital Capture

Medium format – studio

Half Day

Full Day

Available in studio; Rental of studio is not included.

1 x Sinar 54H Single and Multi Pass High End digital back on Rollei Body

\$300

Specifications: 1-, 4- and 16-shot, Sensor dimensions: 49.0mm x 36.7mm

Sensor resolution: 5440 x 4080 pixels. File sizes (at 16 bit TIFF):-
1-shot 130MB; 4-shot 130MB; 16-shot 510MB.

1 x Sinar E-Motion 75 (33megapixels) on Sinar Hy6 Camera
Including 80mm autofocus lens

\$500

Specifications: 1-shot Only. Sensor dimension: 48.0mm x 36mm
Sensor resolution 6668 x 4992 pixels. File sizes (at 16 bit TIFF) 1-shot 130MB

Available lenses:

40mm f4

\$80

55mm shift lens f4.5

\$120

60mm f3.5

\$80

80mm f2.8

\$80

90mm Apo Symmar

\$80

120mm Makro Planar

\$80

180mm f2.8

\$80

Bellows

\$70

Extension tubes

\$50

Prism 45deg

\$60

35mm format – studio/location

Half Day

Full Day

Canon 1DS Mk 1

\$150

Canon 1DS Mk 2

\$250

Canon 1DS Mk 3

\$300

Available lenses:

100mm f2.8 Macro

\$80

12-24mm Sigma

\$80

16-35mm f2.8

\$80

17-35mm f2.8

\$60

20-35mm

\$60

24mm shift lens f3.5

\$80

35-350mm f3.5-5.6		\$80
70-200mm f4.0		\$80
Camera Bag		\$20
Canon Charger		\$20
Canon Shutter Release		\$30
Canon Speedlite 580 EX		\$60
USB Cable		\$20

Hardware & peripherals

Apple MacBook Pro		\$40
Dell 24 inch spare screen		\$40
Outdoor Computer viewing hood		\$25

People

Assistant – Rate 1	\$180	\$250
Assistant – Rate 2	\$200	\$300
Digital Operator		\$350

Production Facilities

Momentum can help put together the best team for your production needs. We can arrange assistants, stylists, make-up artists, set-Builders, talent, props, locations and catering. Just ask us!

Administration Charge		POA
Car Rental		POA
Catering		POA
Cost of Props		POA
Courier Service		POA
Location Survey		POA
Propping		POA
Repaint of cyclorama		\$200
Hair/makeup	POA	POA
Food Stylist	POA	POA

Post-production/retouching

Momentum is offering an extensive service of high quality digital post work. This includes file handling, retouching and photo-compositing. Proof printing and printing up to a metre wide.

POA

PLEASE READ THIS DOCUMENT CAREFULLY TO HELP US PROVIDE AN EFFICIENT HASSLE-FREE RENTAL SERVICE:

HIRE FEES

The Hirer agrees to pay Momentum the hire fees for the equipment at the rates specified in the Equipment Hire Contract from the date and time the equipment is taken out, to the date and time the equipment is returned to Momentum. The Hirer pays for the entire time the equipment is hired out, not for the time the equipment is used. Momentum may request that first time hirers leave a security payment of \$200.00 prior to being able to hire equipment. The security deposit is refunded upon the equipments return and production of a Tax Invoice by Momentum. Late return of Equipment will be charged at the full normal daily rate until the equipment is returned. The minimum hire period is 1 day (24 hours). Weekend hire is from 4pm Friday to 9am Monday and is charged at a 1.5 day rate. A one week hire (7days) is charged at a 4 day hire rate.

TAXES, STAMP DUTY AND GOVERNMENT CHARGES

The Hirer agrees to pay Momentum all and any appropriate taxes, stamp duty and government charges in addition to the hire fees. If a goods and services tax or similar value added tax ("GST") is levied in respect of any taxable supply made under or in connection with this Contract the amount payable for that supply will be increased by the rate of GST.

INSURANCE

Unless the Hirer takes out their own insurance and provides proof of adequate insurance cover (to the satisfaction of Momentum in its absolute discretion) for the full value of the Equipment in the case of loss, theft or damage during the hire period, a damage waiver of 15% of the value of equipment is payable by the Hirer in addition to any hire fees. Where such damage waiver is paid by the hirer and the hirer otherwise complies with the terms of this contract, Momentum shall waiver any claim against the hirer which exceeds the value of the damage waiver, provided the Hirer also pays the further sum ("damage excess") being \$500.00, where the cost of replacement/repair does not exceed \$5,000.00. Where the cost of replacement/repair exceeds \$5,000.00, Momentum may in its discretion, require the Hirer to pay an increased damage excess up to the value of 10% of the cost of replacement/repair of the equipment hired. No glassware (including flash tube, modeling lamp or protection cover) is covered by the said waiver by Momentum and in the event of breakage of the same, the Hirer shall pay Momentum the full replacement cost of the same. First time Hirers do not pay the 15% damage waiver and are 100% responsible for complete replacement/repair costs of damage, lost or stolen hire equipment.

USE OF EQUIPMENT

The Damage Waiver shall not apply if the Hirer uses the equipment for purpose(s) other than that specified (if any) in the Equipment Hire Contract: or during a period other than that specified (if any) in the Equipment Hire Contract. If the equipment is used in a negligent, unskillful or improper manner, or in a manner other than that for which the Equipment was intended or constructed (or if the Hirer leaves the Equipment unattended), and the equipment is thereby lost or damaged, then the Hirer shall be liable to Momentum for any such loss or damage.

FREIGHT/DELIVERY

The Hirer agrees to pay all freight, delivery, transportation, shipping, postage and courier costs whether incurred by the Hirer or Momentum in respect of the delivery and/or return of the Equipment. Momentum charges a flat rate for any courier or VIP delivery or pickup within the Brisbane metropolitan area. The current rate is \$25.00 for a courier delivery/pickup and \$30.00 for a VIP. Momentum is not liable for any delays in delivery of equipment.

PAYMENT

Momentum's usual credit terms apply to those Hirers who have a credit account with Momentum. For Hirers who do not have a credit account, all fees and charges payable under this Contract must be paid in advance and the Hirer agrees to provide full contact details, proof of address and a credit card imprint. The Hirer authorises Momentum to charge the Hirer's credit card for any additional freight and delivery costs incurred and any additional hire fees and other charges incurred as a result of late return equipment.

OWNERSHIP OF EQUIPMENT

The Equipment shall at all times remain the property of Momentum. The Hirer agrees not to sell, transfer license, loan, hire or give the Equipment to any one or to part with or share possession of the equipment or do anything which may affect Momentum's interest in the Equipment. If the Equipment is hired on to a third party by the Hirer - it remains the responsibility of the Hirer to provide proof of insurance under the Hirer's own insurance policy or pay the required Damage Waiver Excess. No discounts are given on contracts if the equipment is not used on the premises of the Hirer.

CLEANING

At the end of the hire period and before returning the Equipment to Momentum, the Hirer agrees to properly clean the Equipment. The Hirer agrees to pay for any cleaning costs incurred by Momentum in the event the Hirer fails in its cleaning obligations. Momentum may deduct such costs from the Hirer's deposit or credit card.

BREAKDOWN

In the event of the hire period and before returning the Equipment the Hirer shall return the Equipment to Momentum immediately and shall on no account repair or attempt to repair the Equipment without the prior consent of Momentum.

LIABILITY

Where permitted by the Trade Practices Act 1974, Momentum shall not be liable to the hirer or any third party in respect of any loss or damage, however, caused arising directly or indirectly from the hire of the Equipment. Momentum's liability if any is limited to a refund of the hire fees charged for such Equipment. All other excludable warranties whether express or implied are excluded. The Hirer indemnifies or holds harmless Momentum from all and any liability, losses, damage, claims, demands and expenses of any kind however caused arising directly or indirectly from this Equipment Hire Contract.

In order to cover our own public liability requirements a copy of the hirers' current public liability policy of no less than \$10 million must be supplied to us before we can confirm any studio booking. Your insurance company will supply you with a "Certificate of Currency."

RESERVATIONS AND CANCELLATIONS

Wherever possible, the Hirer should call Momentum in advance to pre-book Equipment. Failure to cancel pre-booked Equipment at least 24 hours prior will incur a half day Hire Fee.

EQUIPMENT TESTING AND STUDENT TERMS

If there is no prior booking, Equipment hired for equipment testing purposes or by students (on presentation of a valid student card) may at Momentum's discretion be charged 15% off the day Hire Fee (not including weekend hire).

TERMINATION

The Equipment Hire Contract may be terminated immediately by Momentum if the Hirer breaches any term of this Contract.

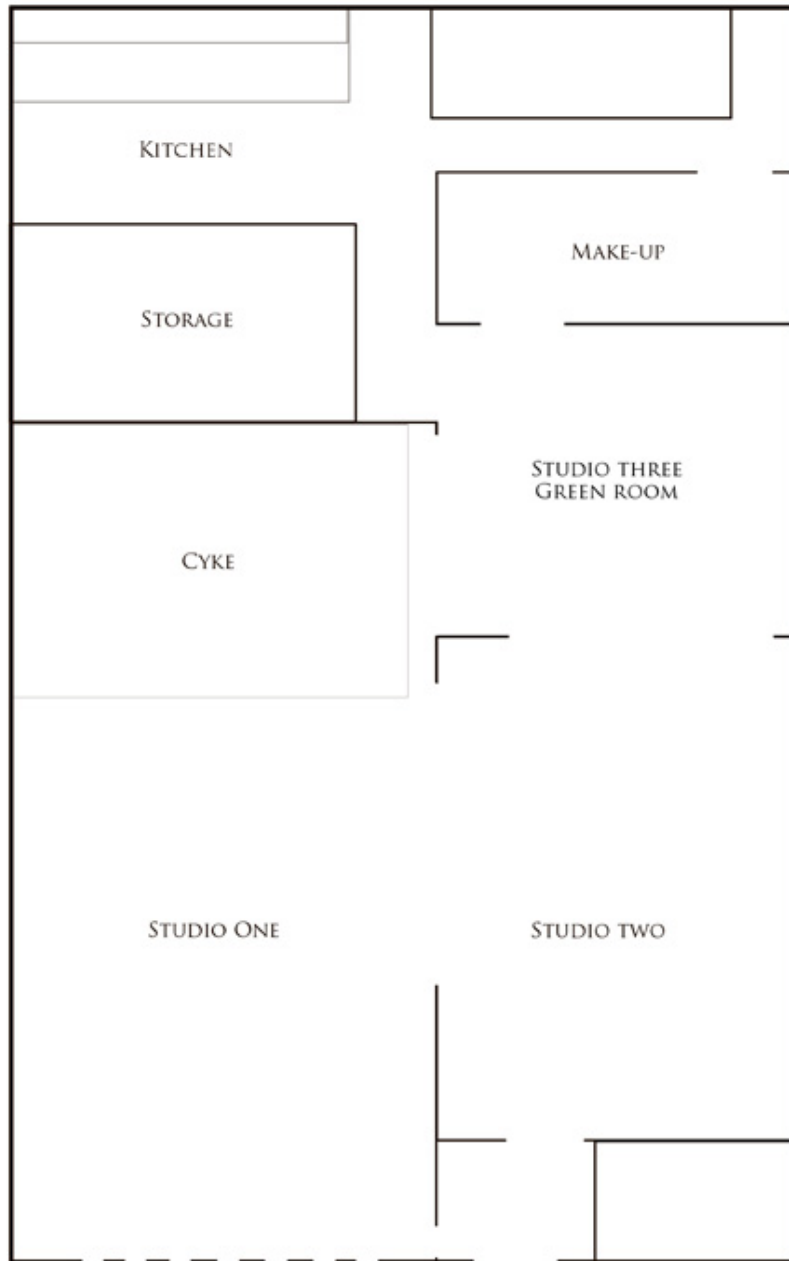
GENERAL

Momentum reserves the right to amend the terms and conditions of this Equipment Hire Contract at any time.

IMPORTANT
NEVER EVER USE FLASH EQUIPMENT ON A GENERATOR
- YOU HAVE BEEN WARNED

FLOOR PLAN OF MOMENTUMSTUDIO 9/31 THOMPSON ST BOWEN HILLS

BREAKFAST CREEK



CAR PARK